

# Rebling Datasheet: Avionics Receptacle Style 2

The members of Rebling's family of avionics bulkhead-mounted receptacle connectors conform to and are QPL'd to Mil Specs MS25182, MS3509, Mil-PRF-18148, Mil-E-18148 and Mil-E-81099 and are available under Rebling's Cage Code 30525. The receptacles highlighted on this datasheet are those which are of the Style 2 variety. Receptacles with Style 1 different profiles and different rear termination options can be found on other datasheets.

## Electrical (per MIL PRF 18148)

**Current**

|               |       |            |
|---------------|-------|------------|
| Rated Current | ----- | 750 amps   |
| Peak Current  |       | 1,500 amps |

**Voltage & Resistance**

|                                      |       |               |
|--------------------------------------|-------|---------------|
| Rated Voltage (DC)                   |       | 750 volts     |
| Dielectric Withstanding Voltage (DC) | ----- | 2,500 volts   |
| Contact Resistance (maximum)         |       | 60 micro-ohms |

## Mechanical (per MIL PRF 18148)

|  |                              |                               |      |
|--|------------------------------|-------------------------------|------|
| Flammability Rating                              |                              | UL94 HB                       |      |
| Environmental Sealing                            | with standard Kit Components | -----                         | IP56 |
|  | with Optional Gasket         |                               | IP68 |
| Operating Temperature                            | -----                        | -85 to +71 C°                 |      |
| Mechanical Shock                                 |                              | 20 Gs – 3 axes                |      |
| Vibration  |                              | 10 Gs – 3 axes                |      |
| Mating Cycles (no electrical load)               |                              | 1,500 cycles                  |      |
| Maximum Wire Size:                               | -----                        | 3/0 (80 mm²)                  |      |
| Maximum Terminal Lug Tongue Width                |                              | 0.76" (19.3 mm) Maximum       |      |
| Terminal Lug Web Width                           |                              | 0.22" (5.6 mm)                |      |
| Recommended Torque on Electrical Connection Nuts | -----                        | 30 - 40 in-lbs (3.4 - 4.5 Nm) |      |

## Compliance

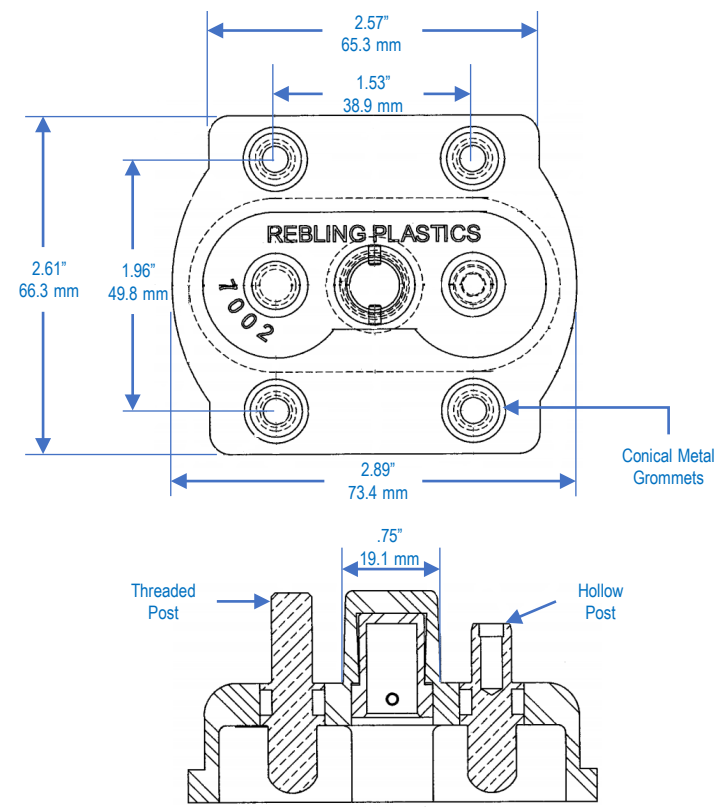
RoHS, REACH, CMRT/3TG                      All parts listed on this datasheet are RoHS, REACH and CMRT/3TG Compliant

## Mounting and Assembly

|  |                           |
|--|---------------------------|
| Recommended Torque on the 5/16 electrical connection nuts                  | 30-40 in-lbs (3.4-4.5 Nm) |
| Torque on the 5/16 electrical connection nuts that causes material failure | 80 in-lbs (9 Nm)          |

## Application Notes

1. When attaching large cables to the rear threaded posts, use Burndy narrow tongue crimp lugs
2. #8 or M4 flathead 82 degree screws are recommended for mounting the connector to the panel



For complete dimensions, download 3D Step files of Receptacle and Accessories at [Rebling.com](http://Rebling.com)



| P/N  | Description   | Plastic Color | Weight (Grams) | UL Material Yellow Card # ** |
|--|---|---------------|----------------|------------------------------|
| 7002-4   | Receptacle, Style 2 with rear Hollow Posts + Drive pins, Blue | Blue          | 113            | -                            |
| 7002-8   | Receptacle, Style 2, Rear Threaded Posts, Blue                | Blue          | 122            | -                            |
| 7002-6G  | Receptacle, Style 2 with rear Threaded Posts, Green           | Green         | 122            | E113219-219243               |
| 7002-10  | Receptacle, Style 2, Rear Threaded Posts, Black               | Black         | 122            | -                            |
| *Receptacle Kit = one Receptacle + two Nuts + two Split Washers, all parts in a small poly bag<br>**UL Material Yellow Cards can be downloaded from <a href="http://ULprospector.com">ULprospector.com</a> |   |               |                |                              |

Mounting Hole Pattern

